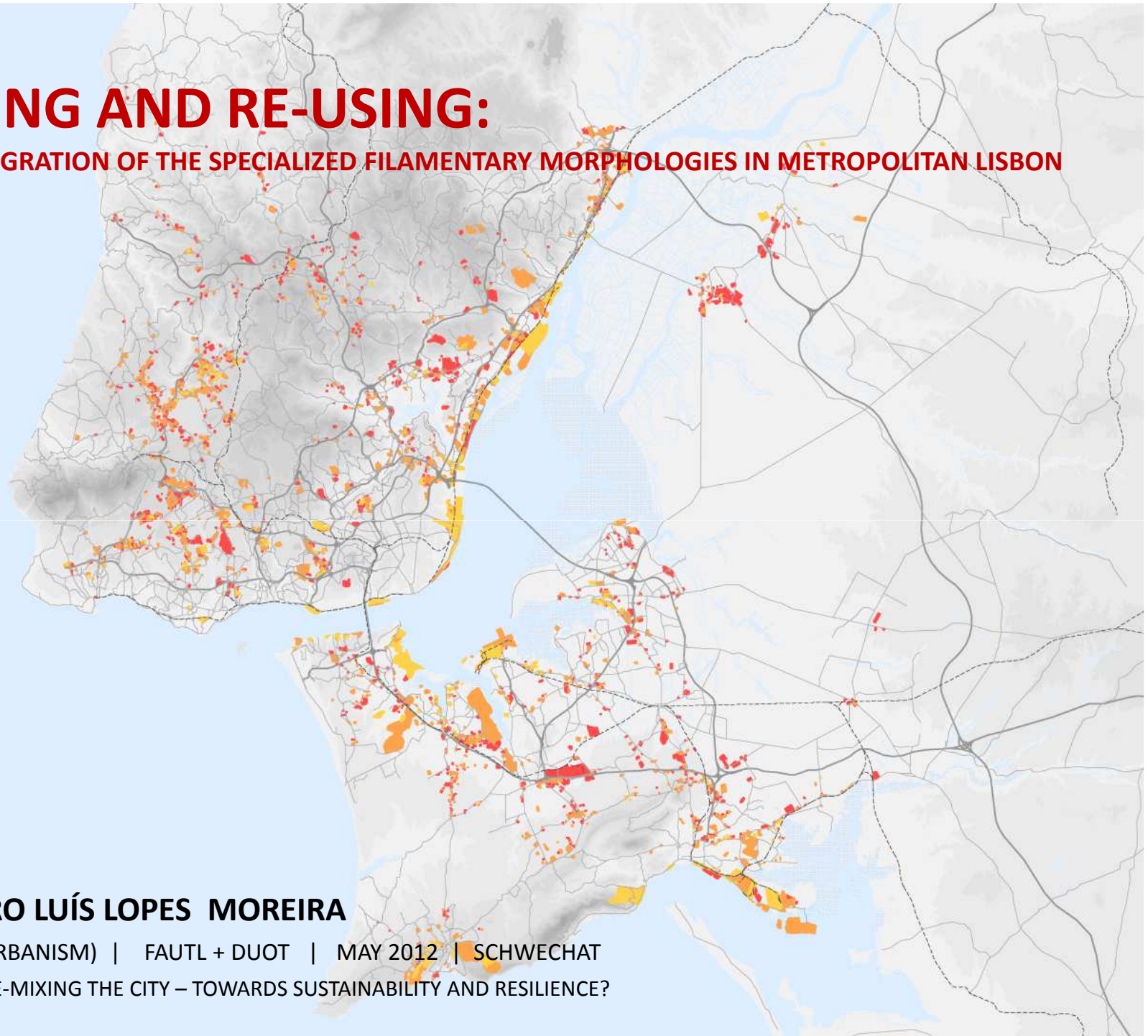


RE-MIXING AND RE-USING:

THE URBAN INTEGRATION OF THE SPECIALIZED FILAMENTARY MORPHOLOGIES IN METROPOLITAN LISBON



INÊS DE CASTRO LUÍS LOPES MOREIRA

PHD CANDIDATE (URBANISM) | FAUTL + DUOT | MAY 2012 | SCHWECHAT

REAL CORP 2012: RE-MIXING THE CITY – TOWARDS SUSTAINABILITY AND RESILIENCE?

STRUCTURE

1 | *METROPOLITAN FILAMENTS*

THE TRANSFORMATIONS IN LISBON'S METROPOLITAN TERRITORY

UNTIL 1970

THE HARBOR AND THE RAILWAY AS THE SUPPORT FOR THE INDUSTRIALIZATION AND THE FORMATION OF THE METROPOLIS

1970-1990

THE ESTABLISHMENT OF A HIGH-SPEED ROAD NETWORK AND THE TERTIARIZATION OF THE TERRITORY

1990-2010

THE CONSOLIDATION OF THE HIGHWAY NETWORK AND THE FUNCTIONAL SPECIALIZATION OF THE *METROPOLITAN FILAMENTS*

2 | RE-MIXING AND RE-USING: FROM AN INDUSTRIAL SITE TO PARQUE DAS NAÇÕES

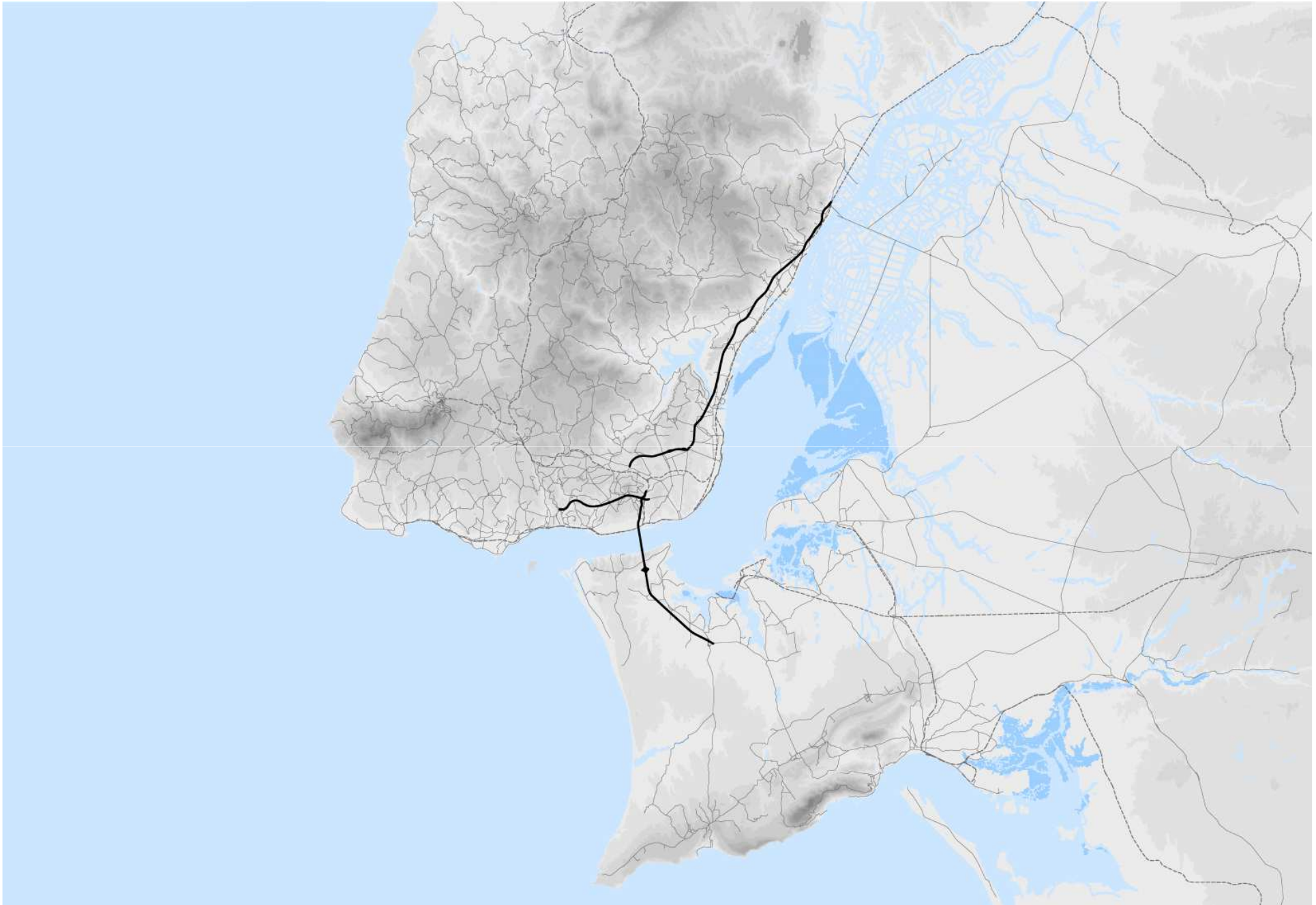
1 | METROPOLITAN FILAMENTS

1 | METROPOLITAN FÍLAMENTS



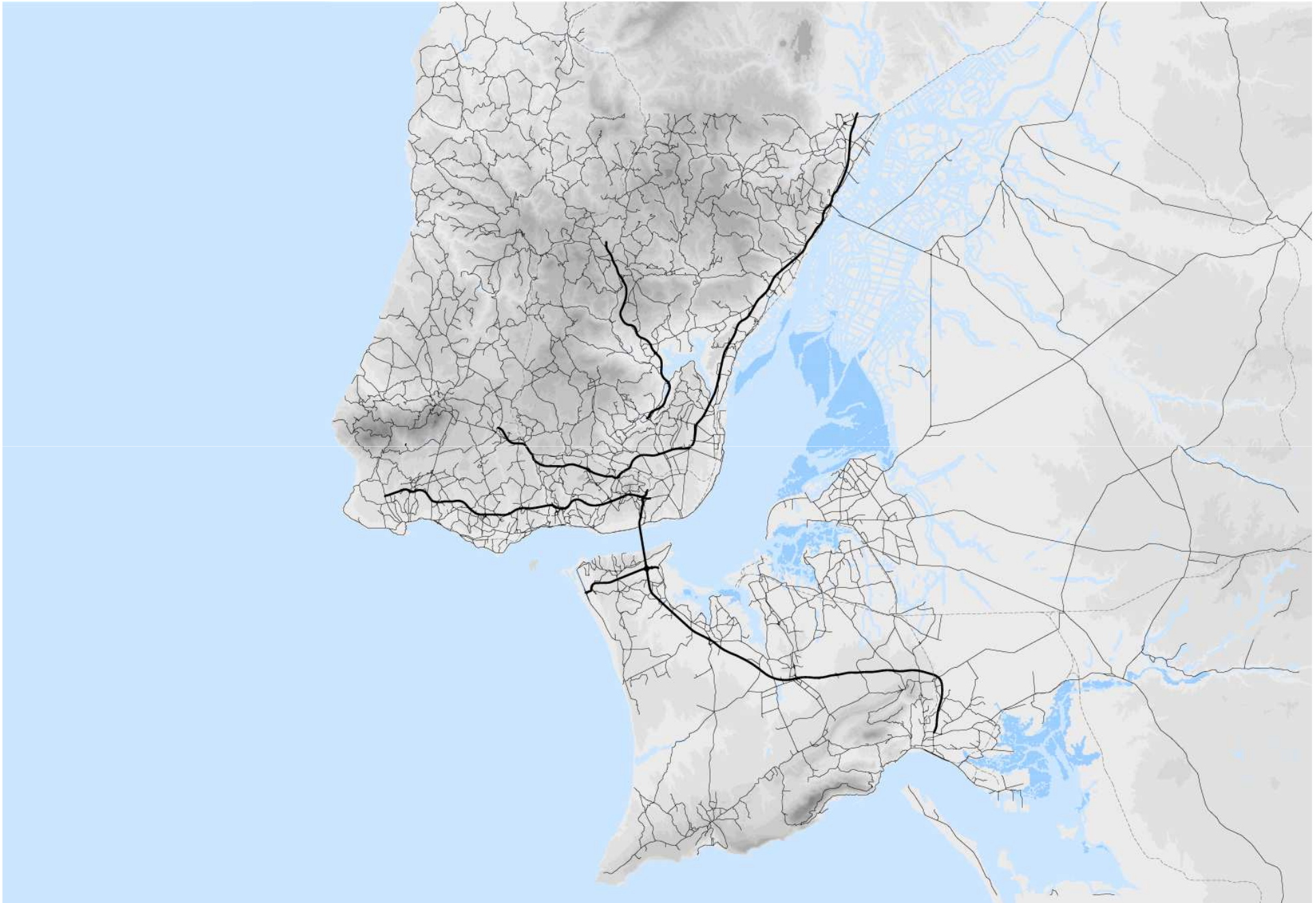
Barreiro in DOMINGUES, A.- *Cidade e Democracia: 30 anos de transformação urbana em Portugal*. Lisboa: Argumentum edições, 2006. ISBN 9789728479398. p. 306; ;Alto da Boa vista e Alfragide

1 | THE TRANSFORMATIONS IN LISBON'S METROPOLITAN TERRITORY



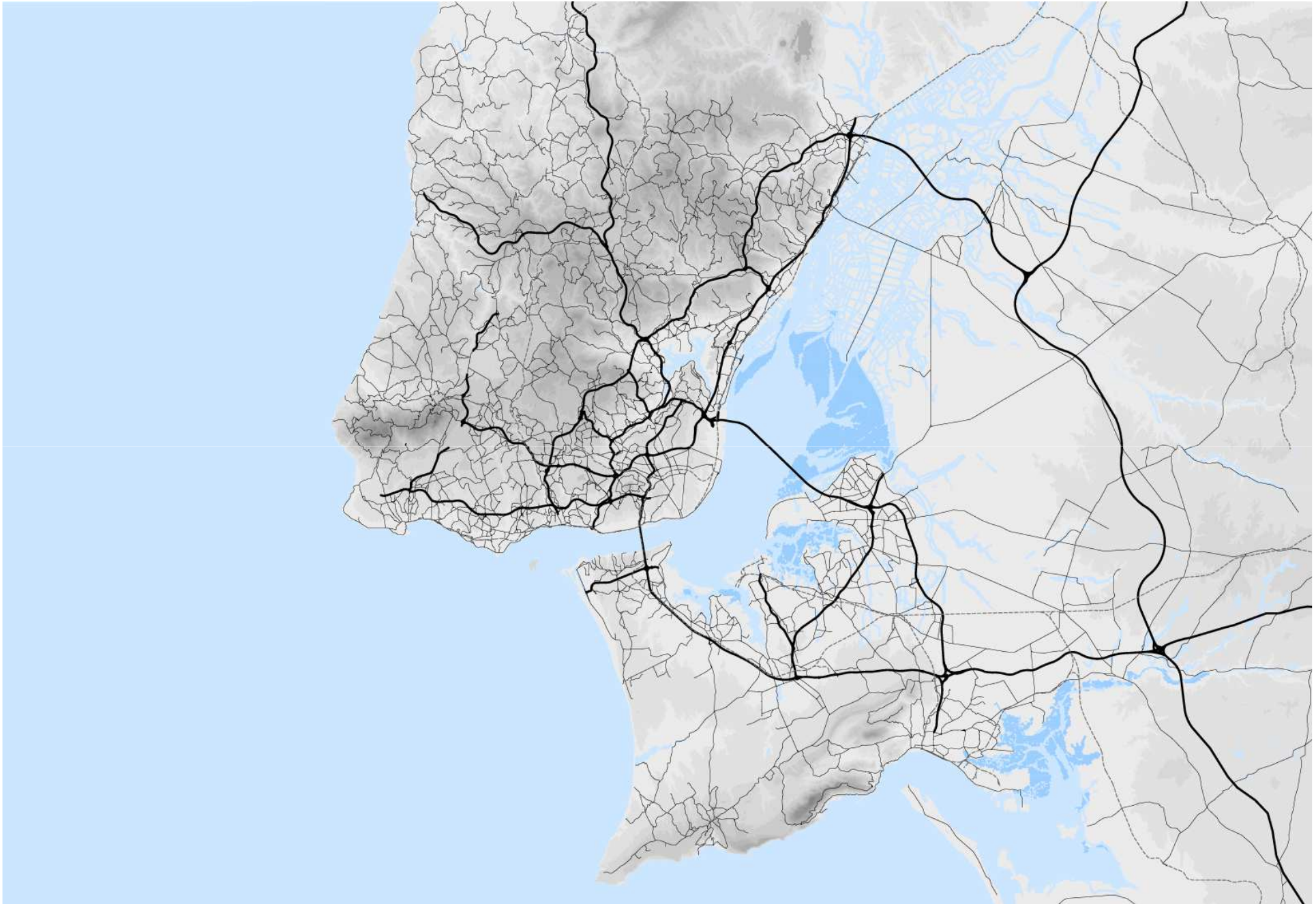
Infra-structure: 1970

1 | THE TRANSFORMATIONS IN LISBON'S METROPOLITAN TERRITORY



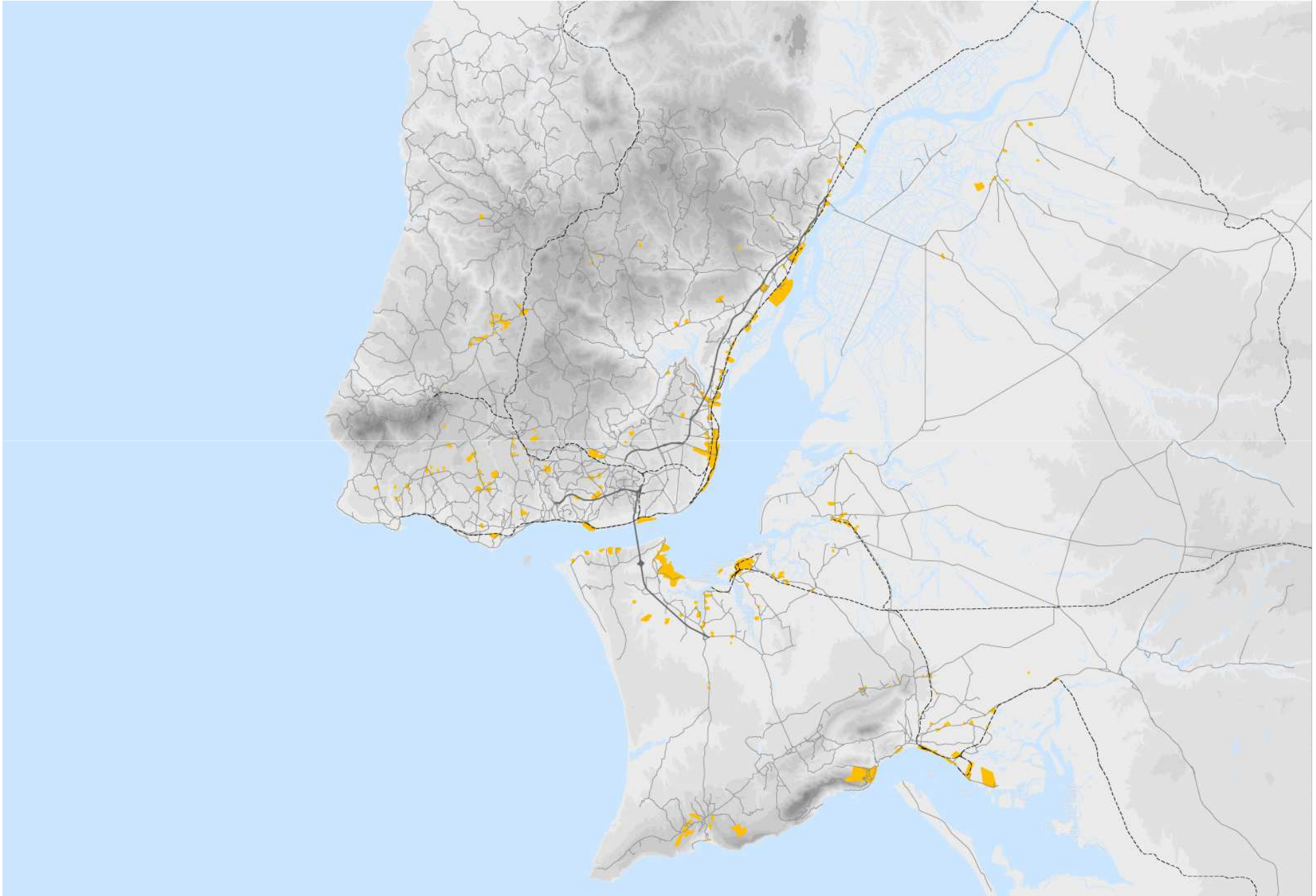
Infra-structure: 1990

1 | THE TRANSFORMATIONS IN LISBON'S METROPOLITAN TERRITORY



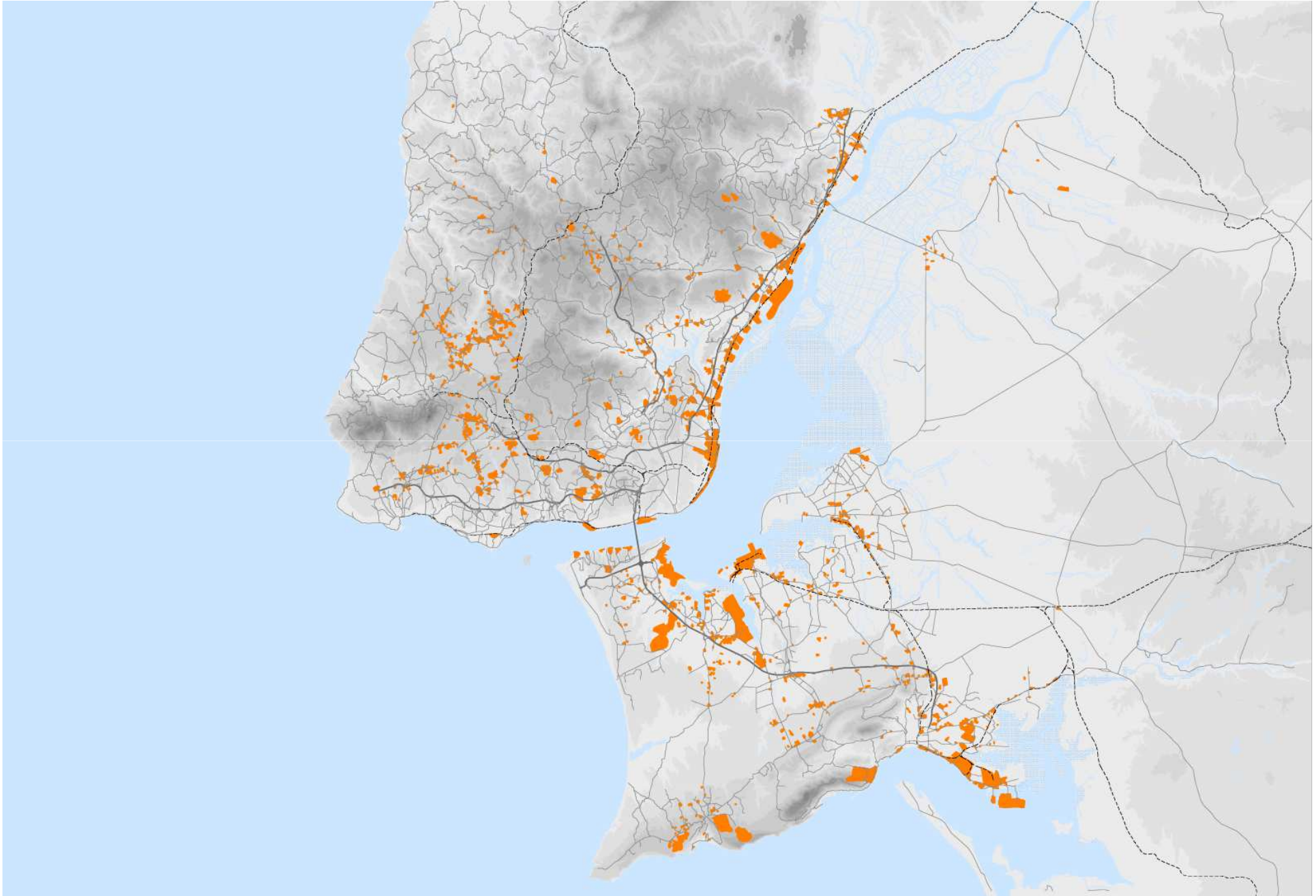
Infra-structure: 2010

1 | THE TRANSFORMATIONS IN LISBON'S METROPOLITAN TERRITORY



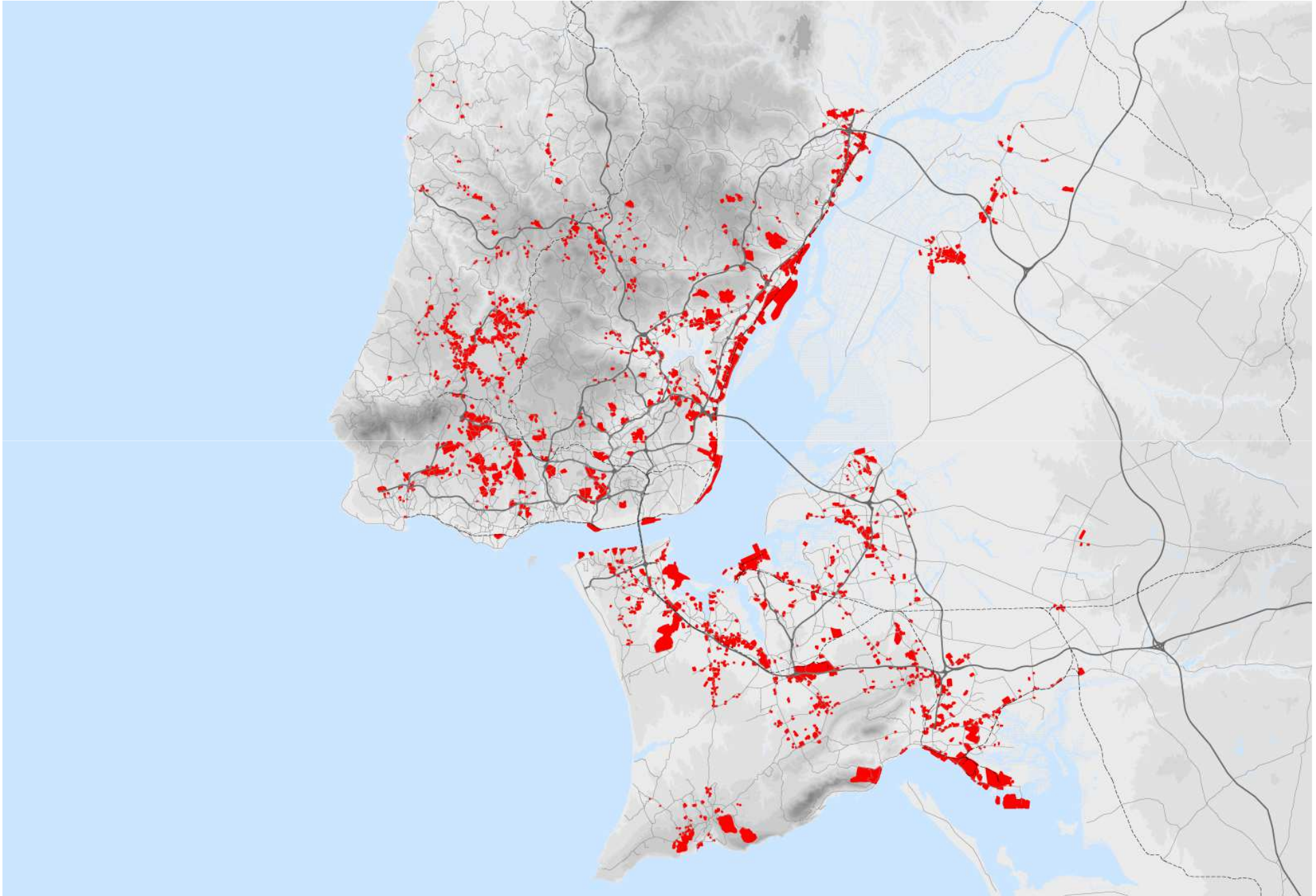
Metropolitan Filaments: 1970

1 | THE TRANSFORMATIONS IN LISBON'S METROPOLITAN TERRITORY



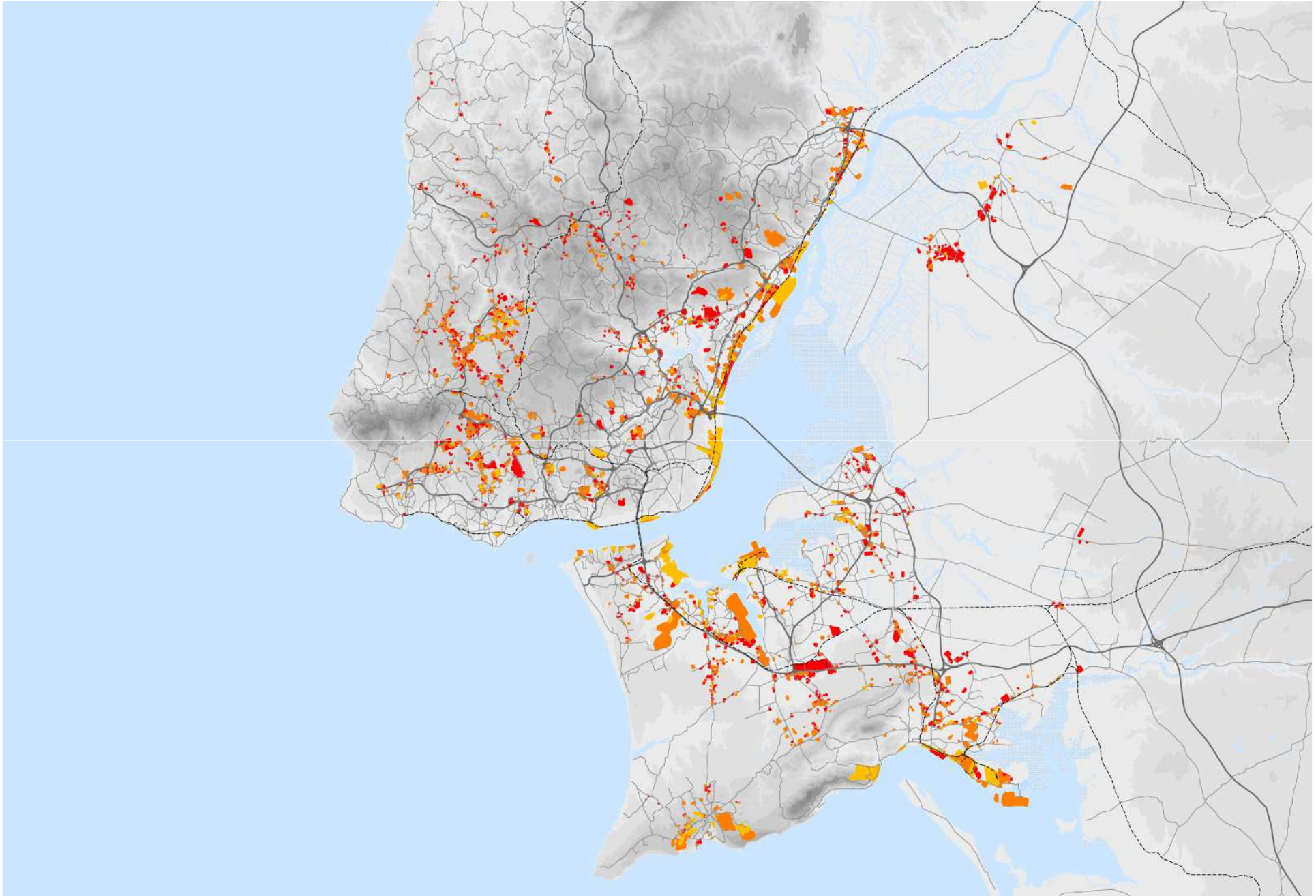
Metropolitan Filaments: 1990

1 | THE TRANSFORMATIONS IN LISBON'S METROPOLITAN TERRITORY



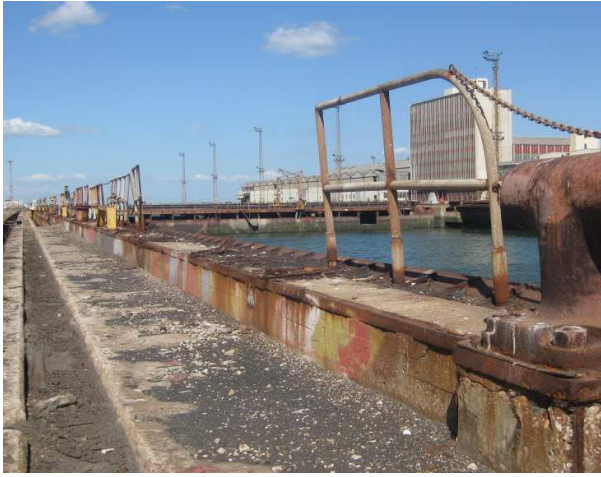
Metropolitan Filaments: 2010

1 | THE TRANSFORMATIONS IN LISBON'S METROPOLITAN TERRITORY



Metropolitan Filaments: 1970-1990-2010

1 | THE TRANSFORMATIONS IN LISBON'S METROPOLITAN TERRITORY



Lisnave in Margueira in <http://lugaresesquecidos.com/forum/viewtopic.php?f=13&t=233>

1 | THE TRANSFORMATIONS IN LISBON'S METROPOLITAN TERRITORY



Fábrica de Moagem, V.F.Xira in <http://lugaresesquecidos.com/forum/viewtopic.php?f=13&t=545&start=0>

IN A FAST-CHANGING WORLD, WHEN VAST INDUSTRIAL AREAS ARE BEING ABANDONED
AND HIGH TECHNOLOGICAL CLUSTERS ARE EMERGING,

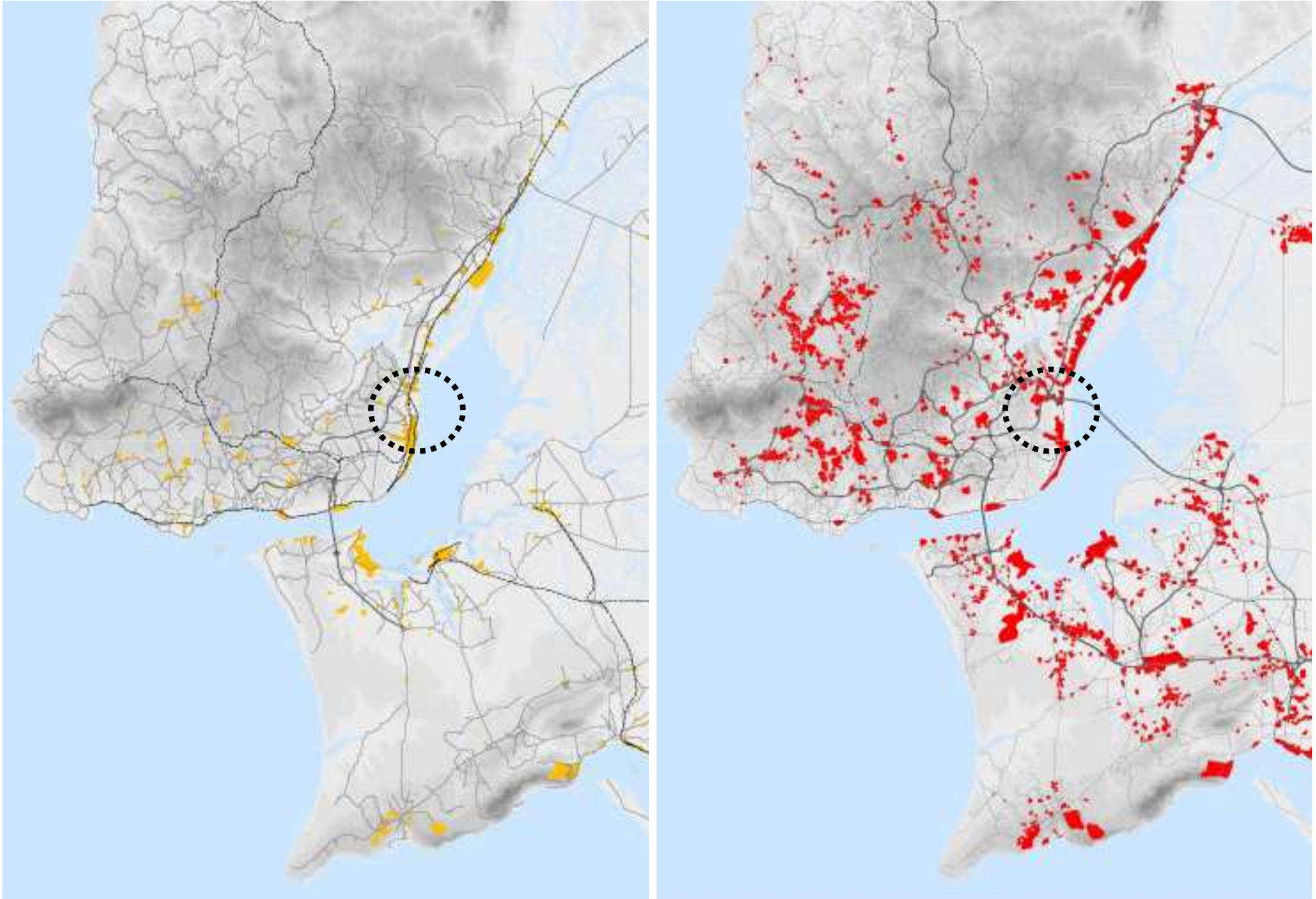
***HOW CAN THE METROPOLITAN FILAMENTS RE-ADAPT AND RE-MIX THE
URBAN FUNCTIONS?***



Tagus Park, Oeiras

**2 | RE-MIXING AND RE-USING:
FROM AN INDUSTRIAL SITE TO PARQUE DAS NAÇÕES**

2 | RE-MIXING AND RE-USING: FROM AN INDUSTRIAL SITE TO PARQUE DAS NAÇÕES



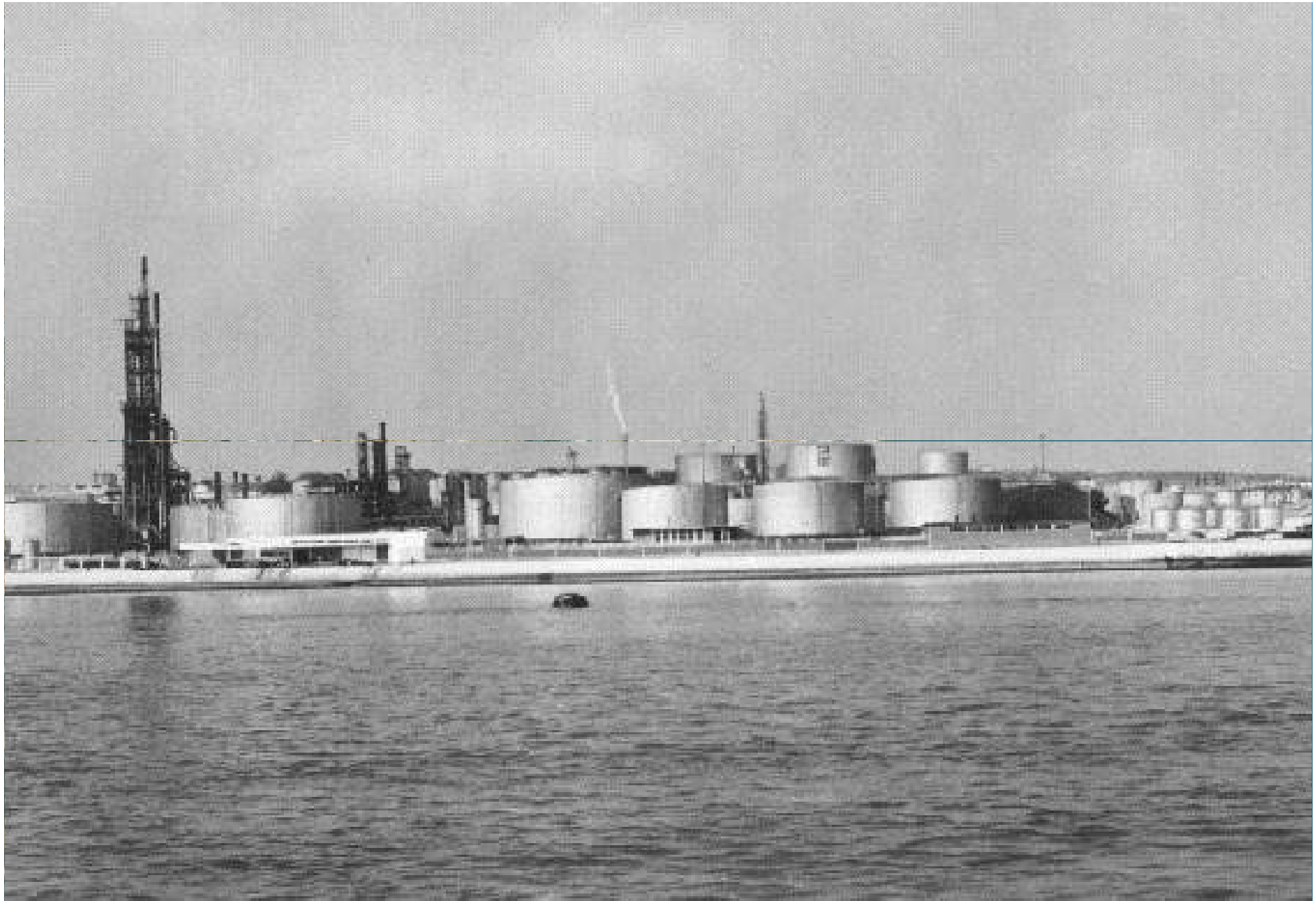
Location of Parque das Nações: 1970-2010

2 | RE-MIXING AND RE-USING: FROM AN INDUSTRIAL SITE TO PARQUE DAS NAÇÕES



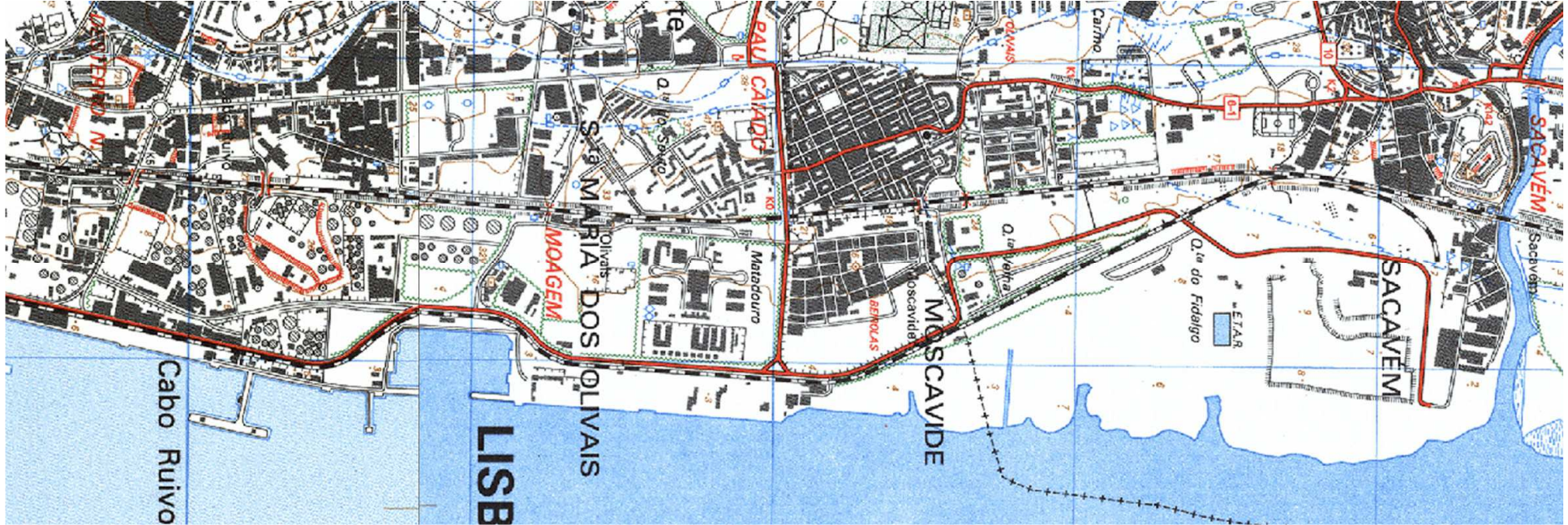
Industrial site, Cabo Ruivo in

2| RE-MIXING AND RE-USING: FROM AN INDUSTRIAL SITE TO PARQUE DAS NAÇÕES



Sacor, Cabo Ruivo in <http://arquivomunicipal.cm-lisboa.pt/default.asp?s=12079>

2| RE-MIXING AND RE-USING: FROM AN INDUSTRIAL SITE TO PARQUE DAS NAÇÕES



Military Charts, 1970-2010

2| RE-MIXING AND RE-USING: FROM AN INDUSTRIAL SITE TO PARQUE DAS NAÇÕES



Parque das Nações in Carta Estratégica de Lisboa, CMLisboa

2| RE-MIXING AND RE-USING: FROM AN INDUSTRIAL SITE TO PARQUE DAS NAÇÕES



Urbanization Plan of Parque das Nações in GEORGE, P.; MORGADO, S. "Área Metropolitana de Lisboa 1975-2001. De la monopolidad a la matricialidad emergente = Metropolitan Area of Lisbon 1970-2001. From monopolarity to an emerging matrix pattern" In FONT, A. (ed.) *L'explosió de la ciutat : morfologies, mirades i mocions sobre les transformacions territorials recents en les regions urbanes de l'Europa Meridional*, pp. 62-85. Madrid, 2007 (reviewed edition)

2| RE-MIXING AND RE-USING: FROM AN INDUSTRIAL SITE TO PARQUE DAS NAÇÕES



Detailed plans of Parque das Nações in GEORGE, P.; MORGADO, S. "Área Metropolitana de Lisboa 1975-2001. De la monopolaridad a la matricialidad emergente = Metropolitan Area of Lisbon 1970-2001. From monopolarity to an emerging matrix pattern" In FONT, A. (ed.) *L'explosió de la ciutat : morfologies, mirades i mocions sobre les transformacions territorials recents en les regions urbanes de l'Europa Meridional*, pp. 62-85. Madrid, 2007 (reviewed edition)

2 | RE-MIXING AND RE-USING: FROM AN INDUSTRIAL SITE TO PARQUE DAS NAÇÕES



2 | RE-MIXING AND RE-USING: FROM AN INDUSTRIAL SITE TO PARQUE DAS NAÇÕES



2 | RE-MIXING AND RE-USING: FROM AN INDUSTRIAL SITE TO PARQUE DAS NAÇÕES



2 | RE-MIXING AND RE-USING: FROM AN INDUSTRIAL SITE TO PARQUE DAS NAÇÕES



2 | RE-MIXING AND RE-USING: FROM AN INDUSTRIAL SITE TO PARQUE DAS NAÇÕES



2 | RE-MIXING AND RE-USING: FROM AN INDUSTRIAL SITE TO PARQUE DAS NAÇÕES



2 | RE-MIXING AND RE-USING: FROM AN INDUSTRIAL SITE TO PARQUE DAS NAÇÕES



Parque das Nações in www.portaldasnacoes.pt and

2 | RE-MIXING AND RE-USING: FROM AN INDUSTRIAL SITE TO PARQUE DAS NAÇÕES



Parque das Nações in <http://www.my-world-travelguides.com/portugal.htm>

THANK YOU FOR YOUR ATTENTION

INESLMOREIRA@GMAIL.COM | 2012