



# Development of a Communication Tool to Frame a Vision for Changing Neighbourhoods



FH Salzburg

Markus Karnutsch



# CONTENT

1. Initial Situation
2. Research Question
3. Neighbourhood Development Strategy
4. Conclusion



1.

# INITIAL SITUATION

Urban layout | Reference neighbourhood

# North-South-Divide



North (Source: Salzburg University of Applied Sciences)



Centre (Source: Salzburg University of Applied Sciences)



South (Source: Salzburg University of Applied Sciences)



# Reference Neighbourhood

- ▷ Post-war settlement of the 70s
- ▷ In a former suburban location
- ▷ Sub-standard HVAC & insulation
- ▷ Social housing
- ▷ 40 % of residents over 60 years



# Reference Neighbourhood



1.250 100.000 m<sup>2</sup>



# Focus: Austrian housing cooperations

- ▷ 20s – 30s | 50 – 70s | today
- ▷ Government funded housing
- ▷ rent-gearred-to-income program for low-income residents



Karl-Marx court, Vienna, 1930 (Source: wien.gv.at)



Alt-Erlaa, Vienna (Source: derstandard.at/gedlicka)



Social housing, Vienna, opened 2015 (Source: detail.de/G.Hagen)

2.

# RESEARCH QUESTION





Which measures are feasible in order to redevelop the settlement towards CO2 neutrality?

3.

# NEIGHBOURHOOD DEVELOPMENT STRATEGY

# Target

„The vision **frames** and **visualises** a desired target condition. It creates inward **orientation** and transports an **image** to the outside.“

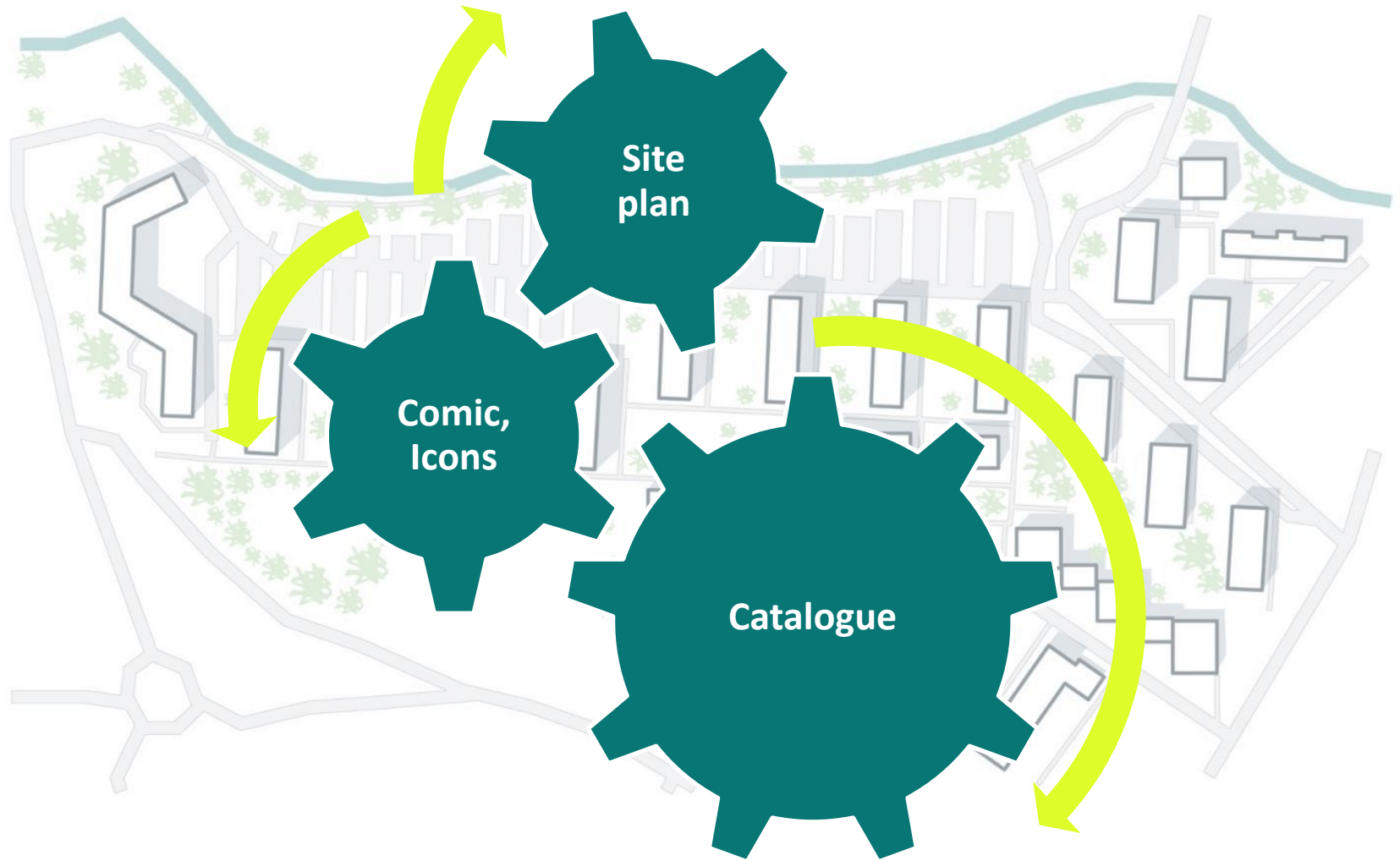
# Iterative Development Process



# Vision



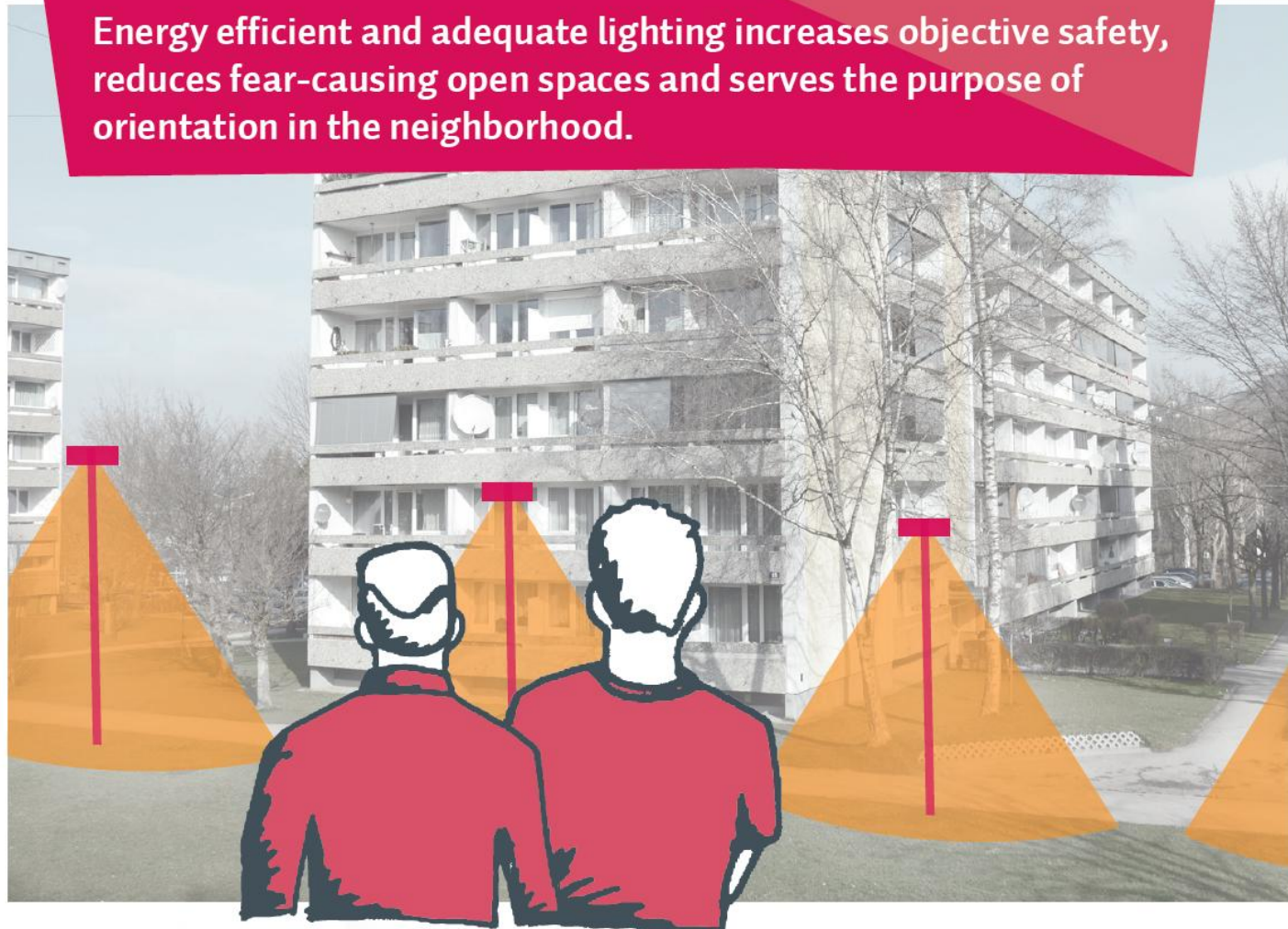
# Three Components





# Example – Social

Energy efficient and adequate lighting increases objective safety, reduces fear-causing open spaces and serves the purpose of orientation in the neighborhood.



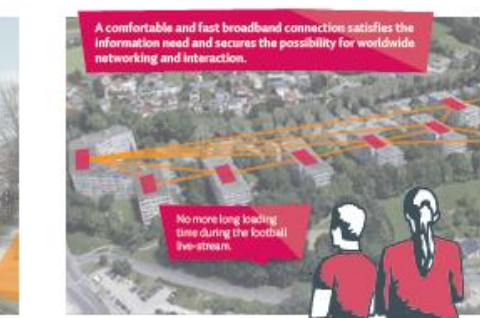
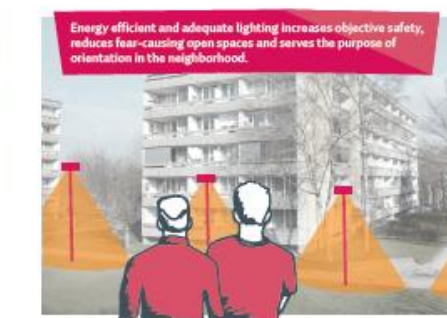
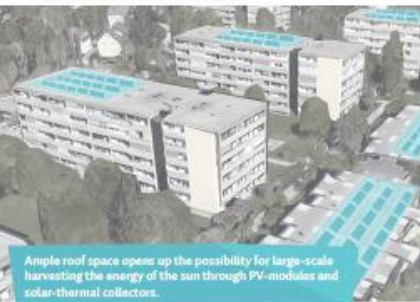
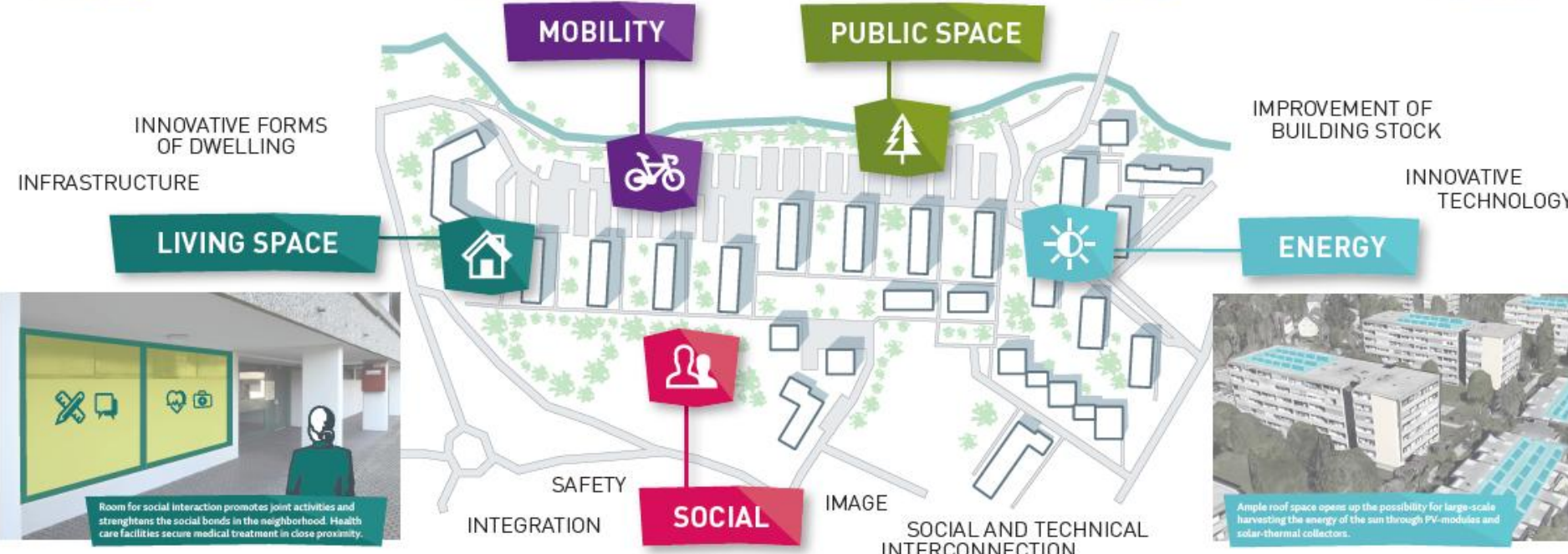
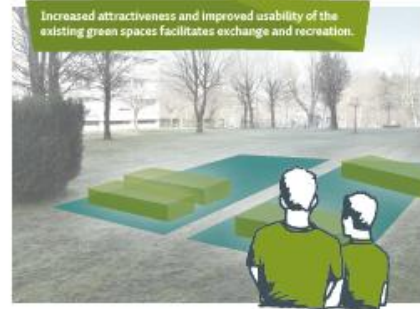


# Example – Living Space



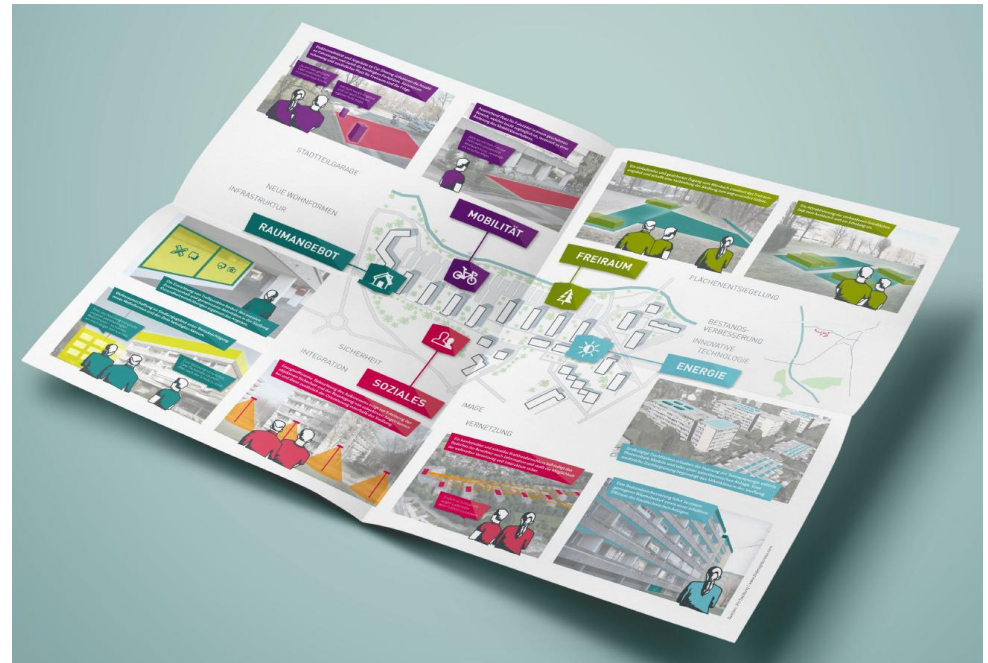
**Room for social interaction promotes joint activities and strengthens the social bonds in the neighborhood. Health care facilities secure medical treatment in close proximity.**







# Folder for communication



4.

CONCLUSION

# Fear of residents

- ▷ Participation is not legally mandatory
- ▷ Wider acceptance among residents is necessary

**COURAGE**

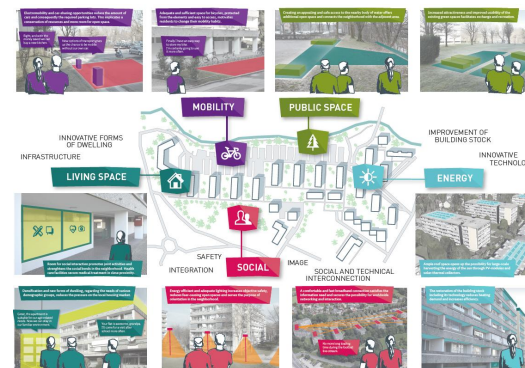
~~**FEAR**~~

# Completion of the structured and loosened town

- ▷ Inclusion of all stakeholders
- ▷ Method for harmonization
- ▷ Enables prioritization
- ▷ Transferability
- ▷ Powerful communication tool



Wolfsburg 1969 (Source: dhm.de)



Source: Salzburg University of Applied Sciences; 2|4 Designbureau

# Thanks!

## Any questions?

Salzburg University of Applied Sciences  
Smart Building & Smart City

**Markus Karnutsch**

+43 (0)50 2211-2708

[markus.karnutsch@fh-salzburg.ac.at](mailto:markus.karnutsch@fh-salzburg.ac.at)

**Stefan Netsch**

+43 (0)50 2211-2713

[stefan.netsch@fh-salzburg.ac.at](mailto:stefan.netsch@fh-salzburg.ac.at)



# ACKNOWLEDGMENTS

The research leading to these results is part of the research project “Smarte Stadtteilsanierung Itzling-Goethesiedlung in Salzburg” which was commissioned and funded by the “Klima- und Energiefonds” under the authority of the Austrian Federal Ministry for Transport, Innovation and Technology (BMVIT).

More information on the research project can be obtained here (German):

<http://www.smartcities.at/stadt-projekte/smart-cities/smartitzgoes/>

## Project Partners



FH Salzburg

